

# The Future of AI is on the Edge

**Dr Varun Ojha**

**Associate Professor in Artificial Intelligence**

**School of Computing Newcastle University**

**AI Theme Leader, National Edge AI Hub**

[varun.ojha@newcastle.ac.uk](mailto:varun.ojha@newcastle.ac.uk)

[ojhavk.github.io](https://ojhavk.github.io)

[edgeaihub.co.uk](https://edgeaihub.co.uk)

**at**

**NCL Action Event, 27 Feb 2025**



**National Edge AI Hub**



Engineering and  
Physical Sciences  
Research Council

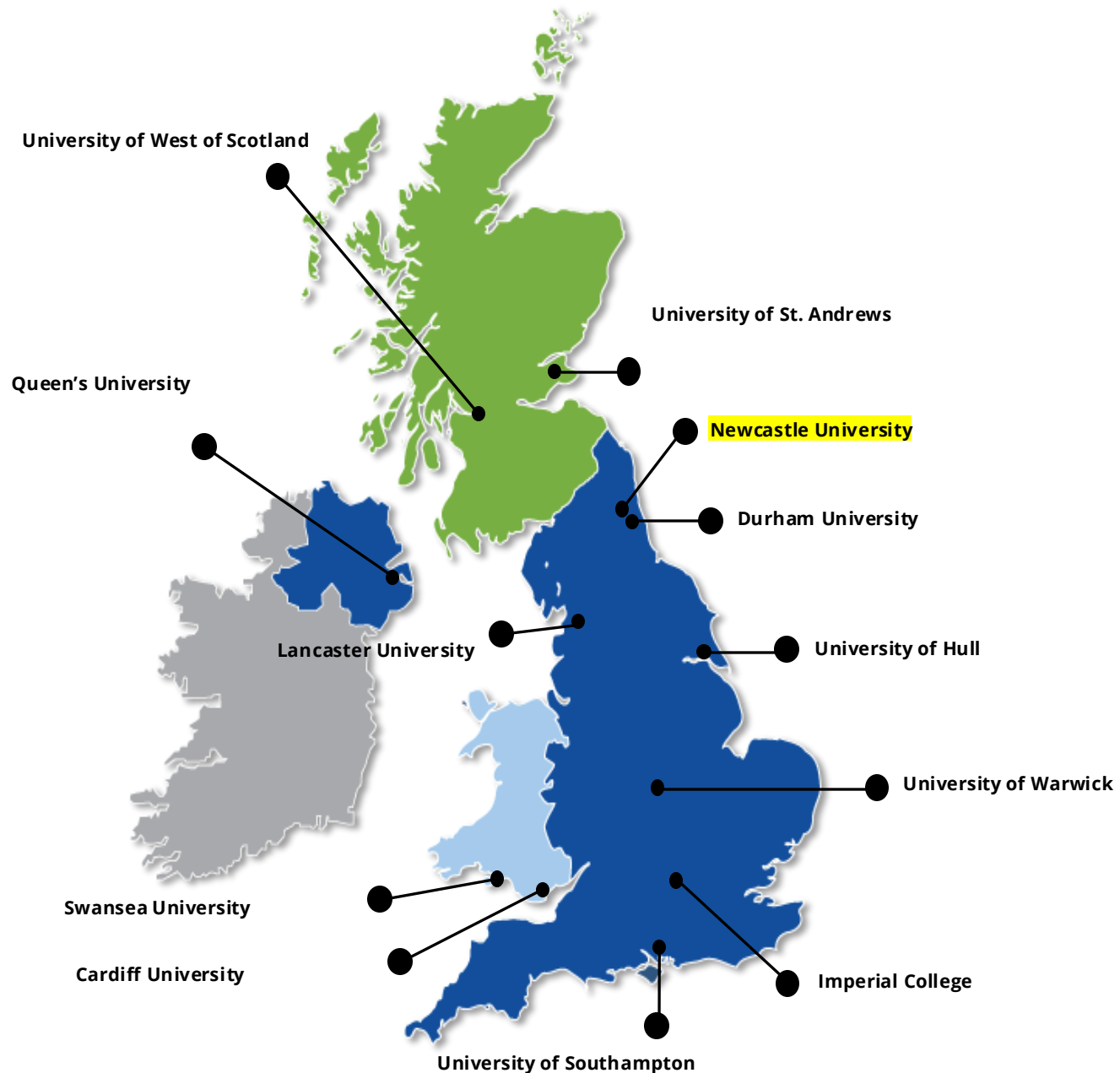


# National Edge AI Hub



**EPSRC**  
**£12 million**  
**investment**

[edgeaihub.co.uk](http://edgeaihub.co.uk)



# Artificial Intelligence (AI)

- **General-purpose AI** like the robots of science fiction is incredibly hard.
  - Human brain appears to have lots of special and general functions, integrated in some amazing way that we really do not understand at all (yet)
- **Special-purpose AI** is more doable (nontrivial)
  - E.g., chess/poker playing programs, logistics planning, automated translation, voice recognition, web search, data mining, medical diagnosis, keeping a car on the road



how far

Grok

runway

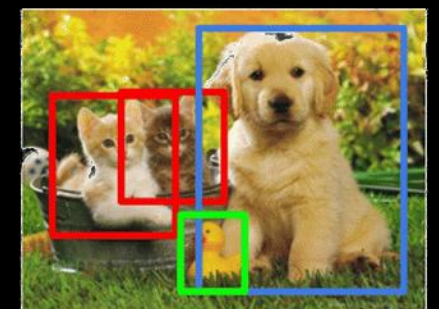
Gemini

ChatGPT

how close



CAT



CAT, DOG, DUCK

1



2



instinct

# Generative AI

Trained on AVA: A Large-Scale Database for Aesthetic Visual Analysis (255,000 images)



a dolphin in an astronaut suit on saturn, artstation



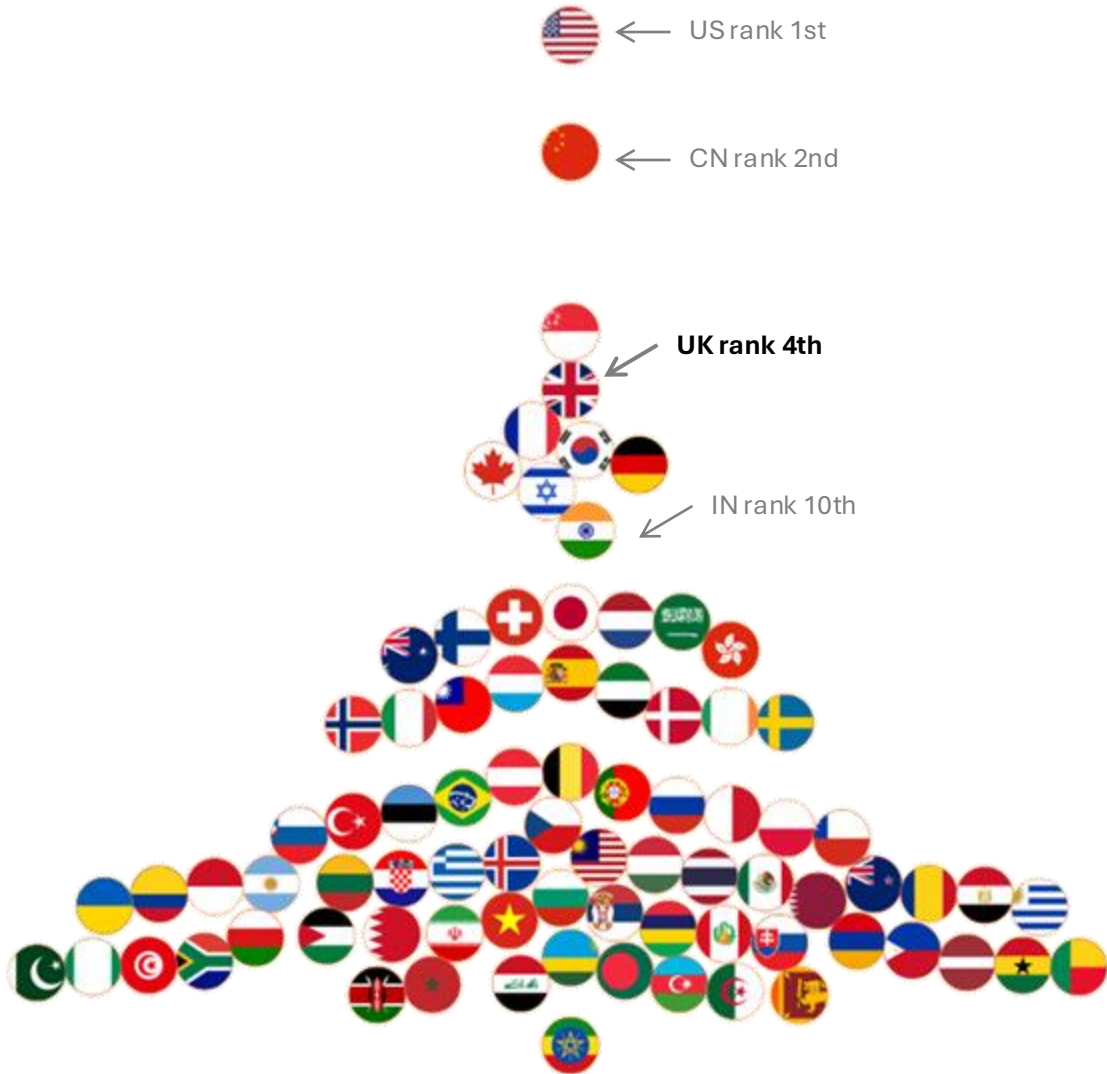
a propaganda poster depicting a cat dressed as french emperor napoleon holding a piece of cheese



a teddy bear on a skateboard in times square

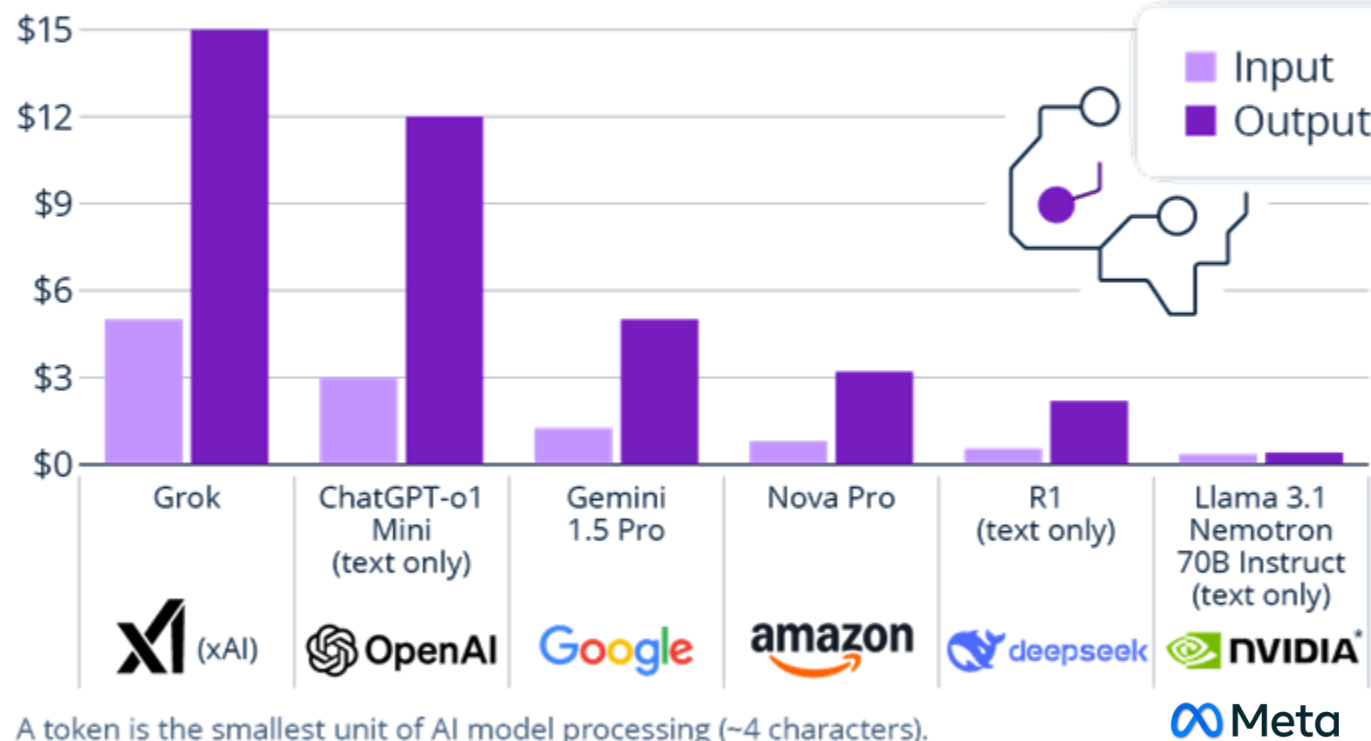
DALL·E 2 Outputs

# AI Arms Race



# DeepSeek-R1 Upsets AI Market With Low Prices

Estimated price for processing one million input/output tokens on different AI models



A token is the smallest unit of AI model processing (~4 characters).  
o1 is ChatGPT's latest model. List includes most comparable model per company

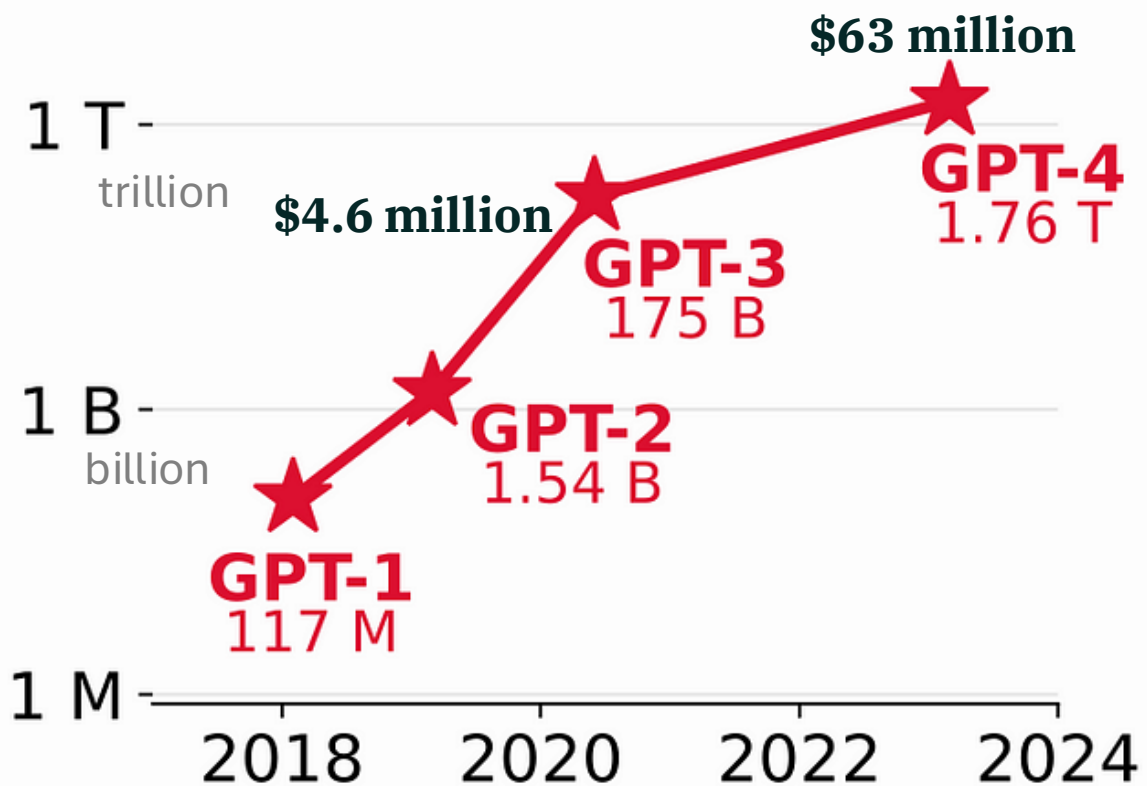
\* Uses Meta's open-source Llama AI

Source: DocsBot

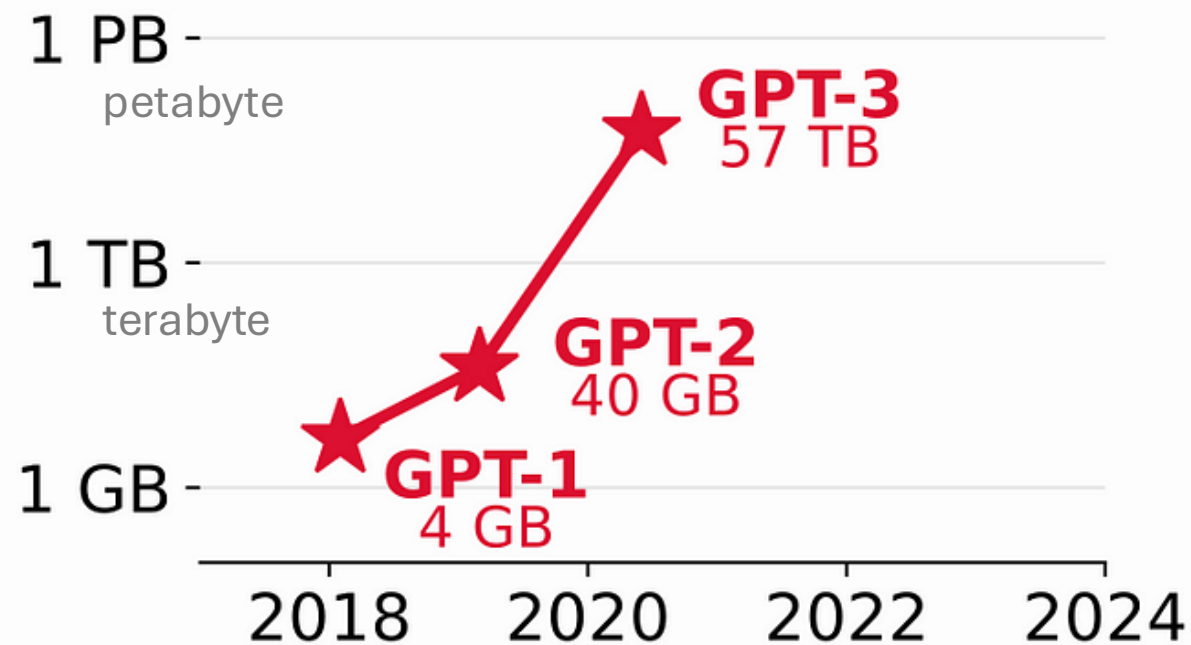


# Massive AI Model and Data Size

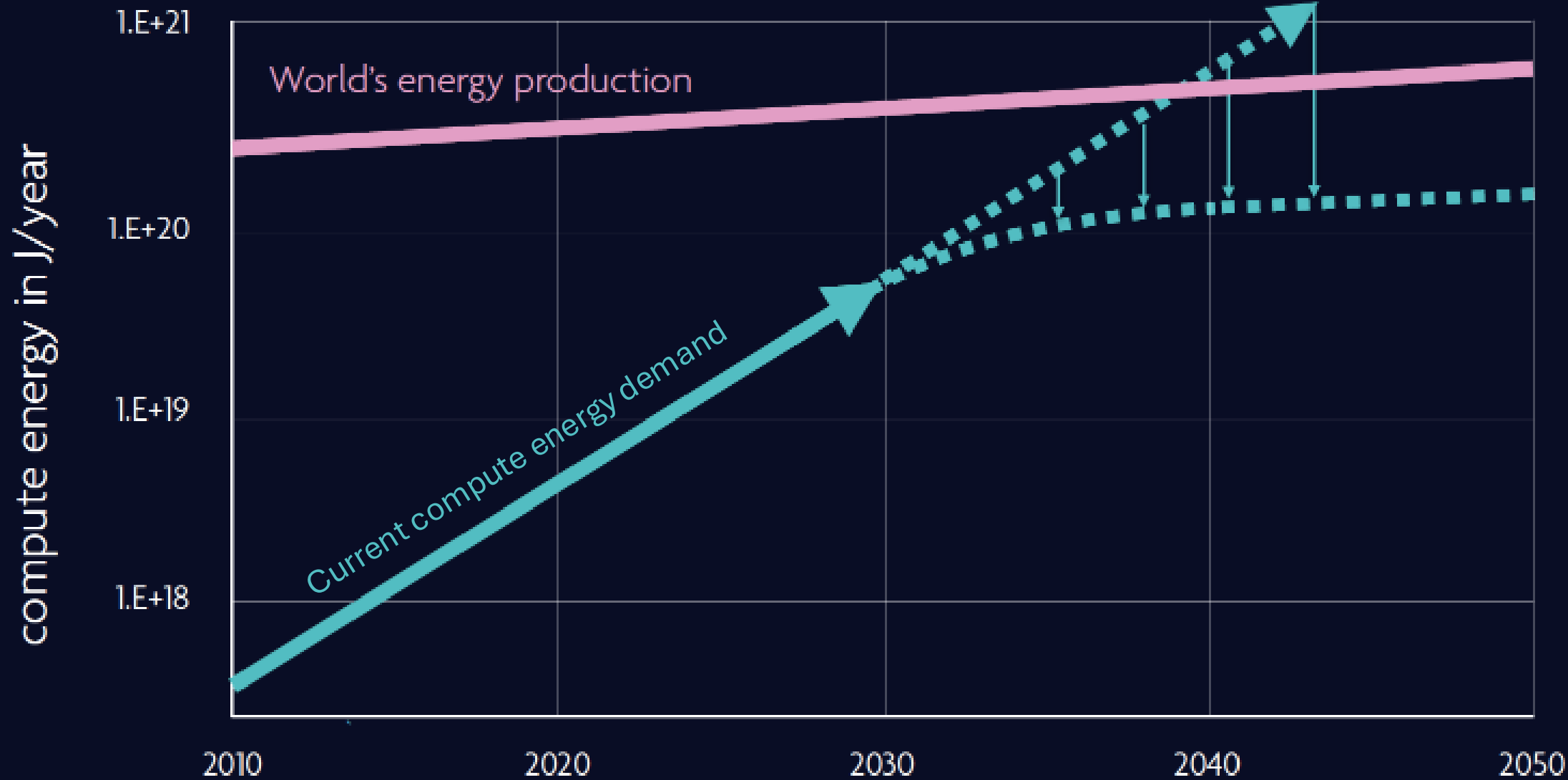
## Parameters Count



## Training Data Size





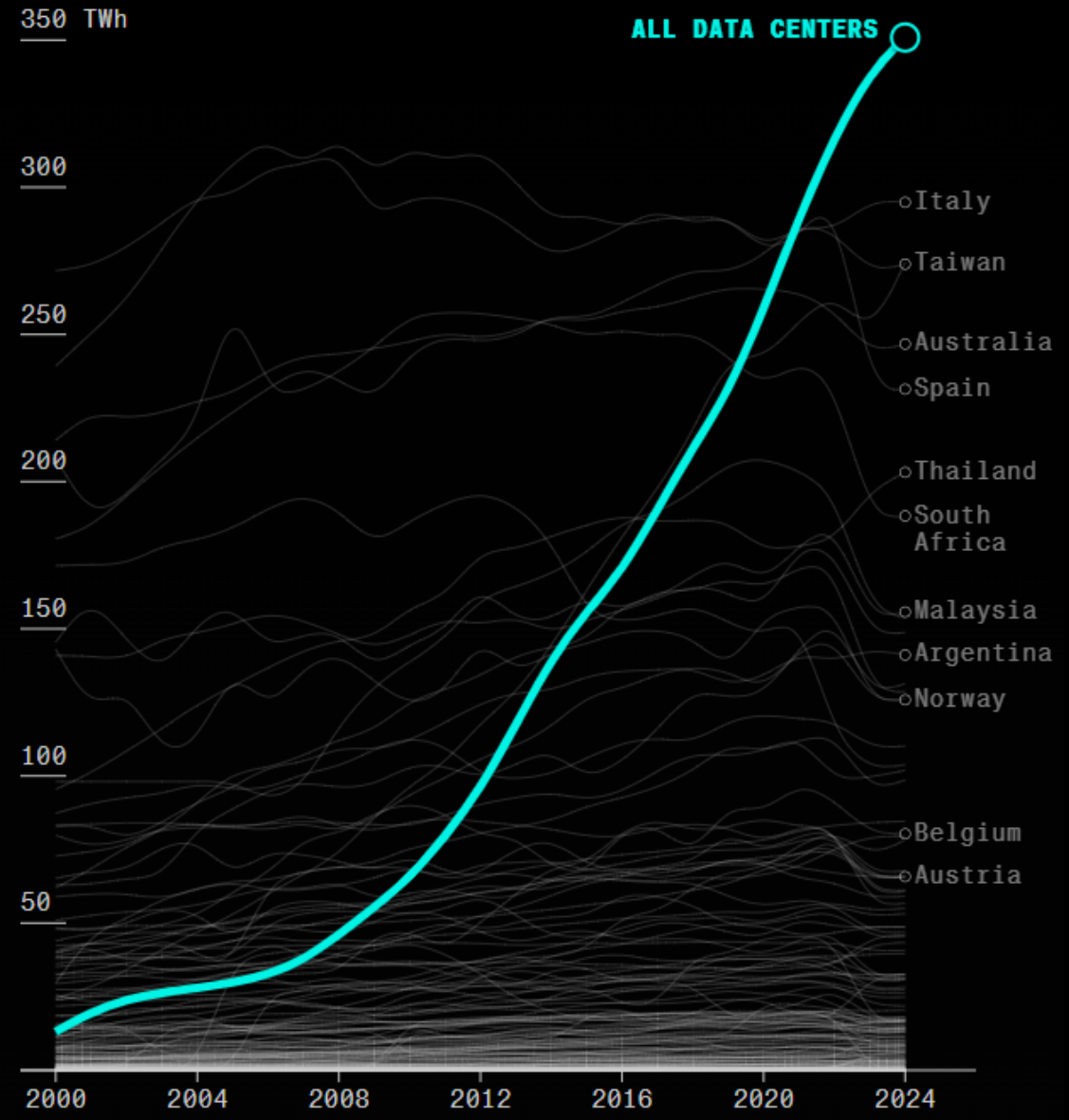


Source: SRC decadal plan 2020

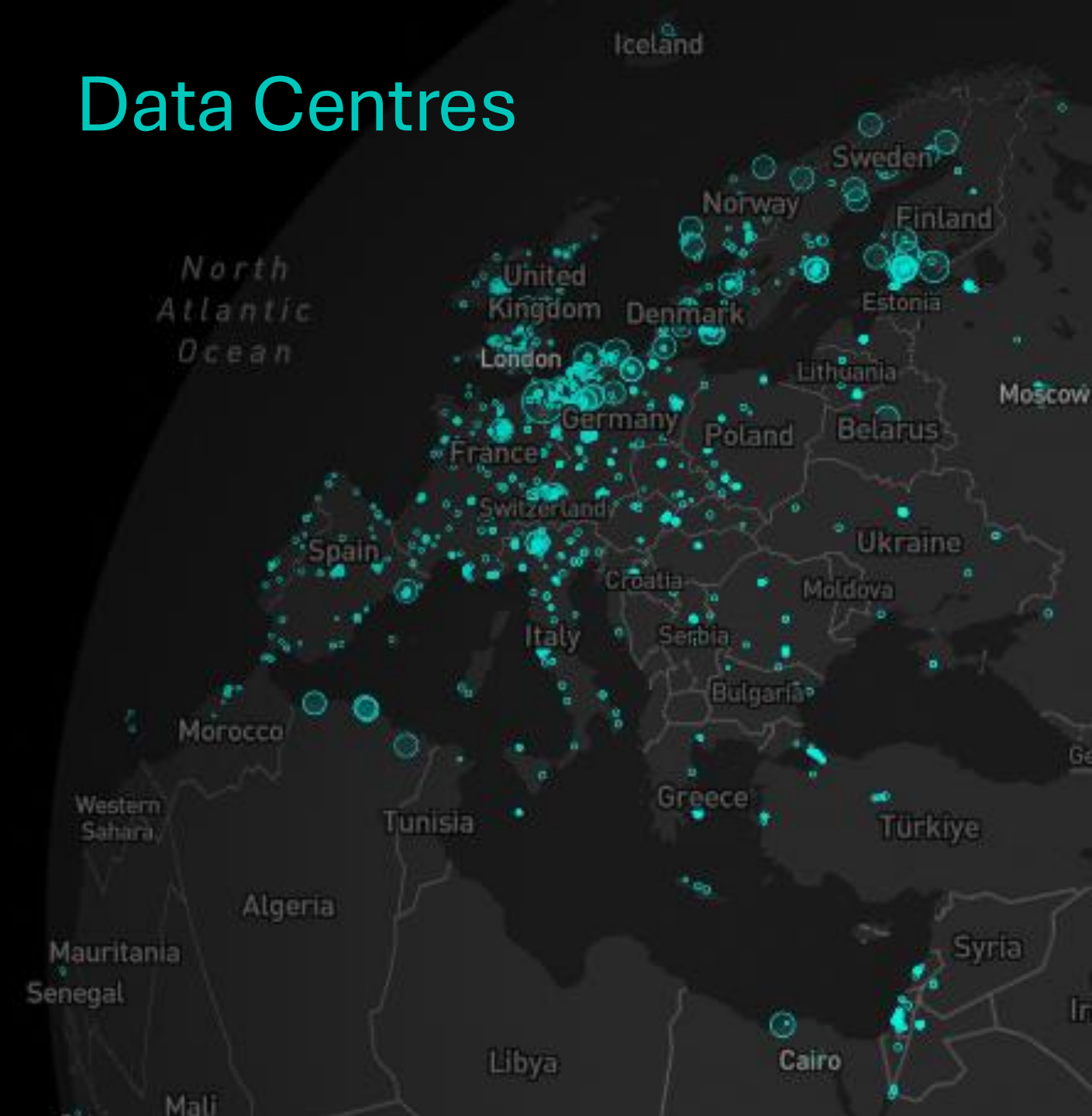
# Altogether, data centers use more electricity than most countries

Only 16 nations, including the US and China, consume more

Source: Bloomberg

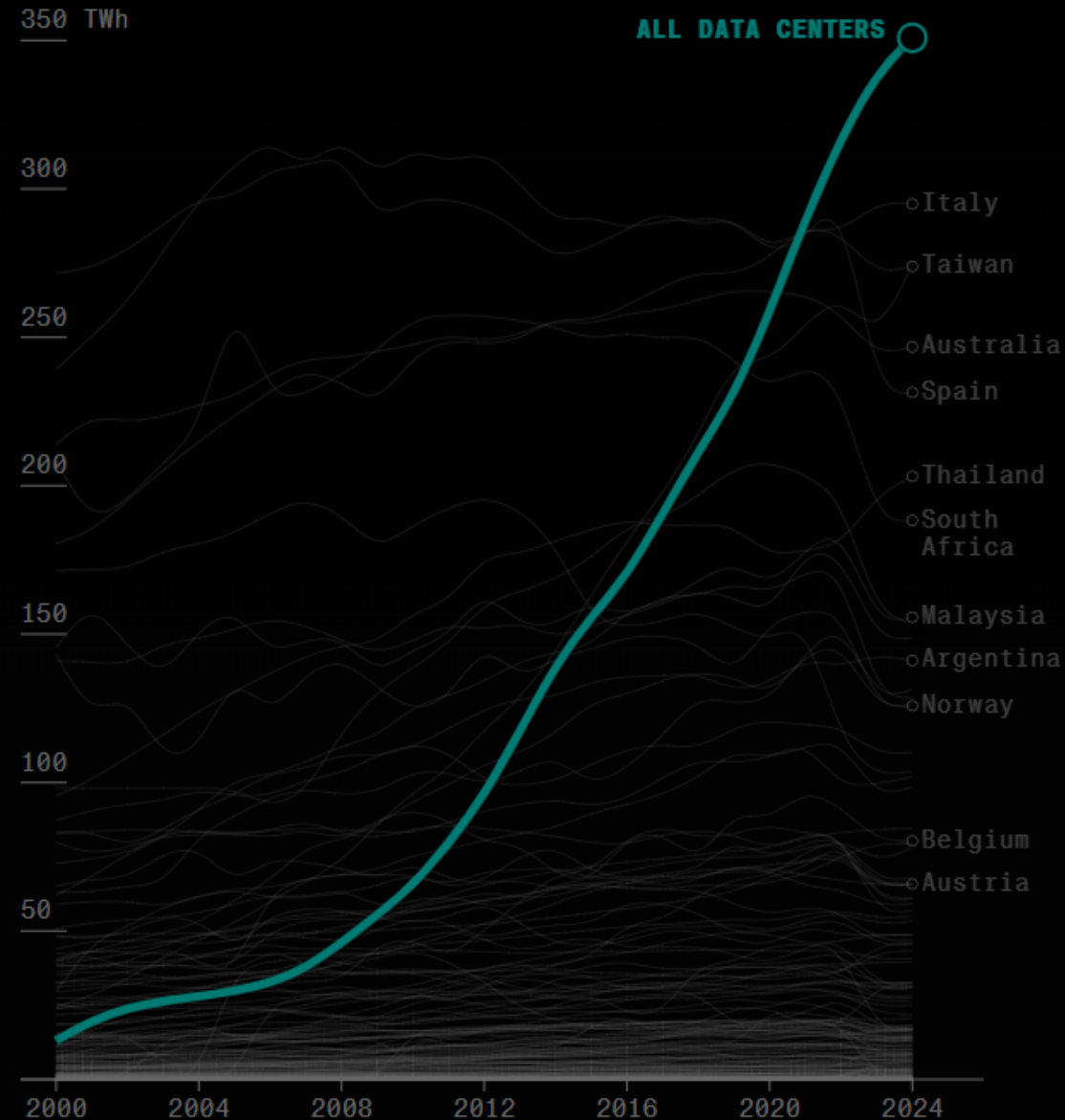


# Data Centres



# Altogether, data centers use more electricity than most countries

Only 16 nations, including the US and China, consume more



## Potential solutions to energy problem:

### Cloud AI → Edge AI

- Moving AI applications from the cloud to the edge
- AI model simplification techniques to reduce power consumption
- AI Model quantization, etc.
- On device (Edge) AI model training
- Federated Learning

# Edge AI

- Unlike Cloud AI (e.g., ChatGPT that runs in data centers), edge AI runs at the edge computing devices such smartphones, cameras, cars, medical devices, ensuring quality of data for inference
- Reduces latency, cost, and power consumption
- Protects data privacy and reduce improve data security and cybersecurity
- Reduces risk of inference failure in critical systems (e.g., autonomous vehicles, healthcare devices) that may endanger lives

# Everyone is a walking AI computer

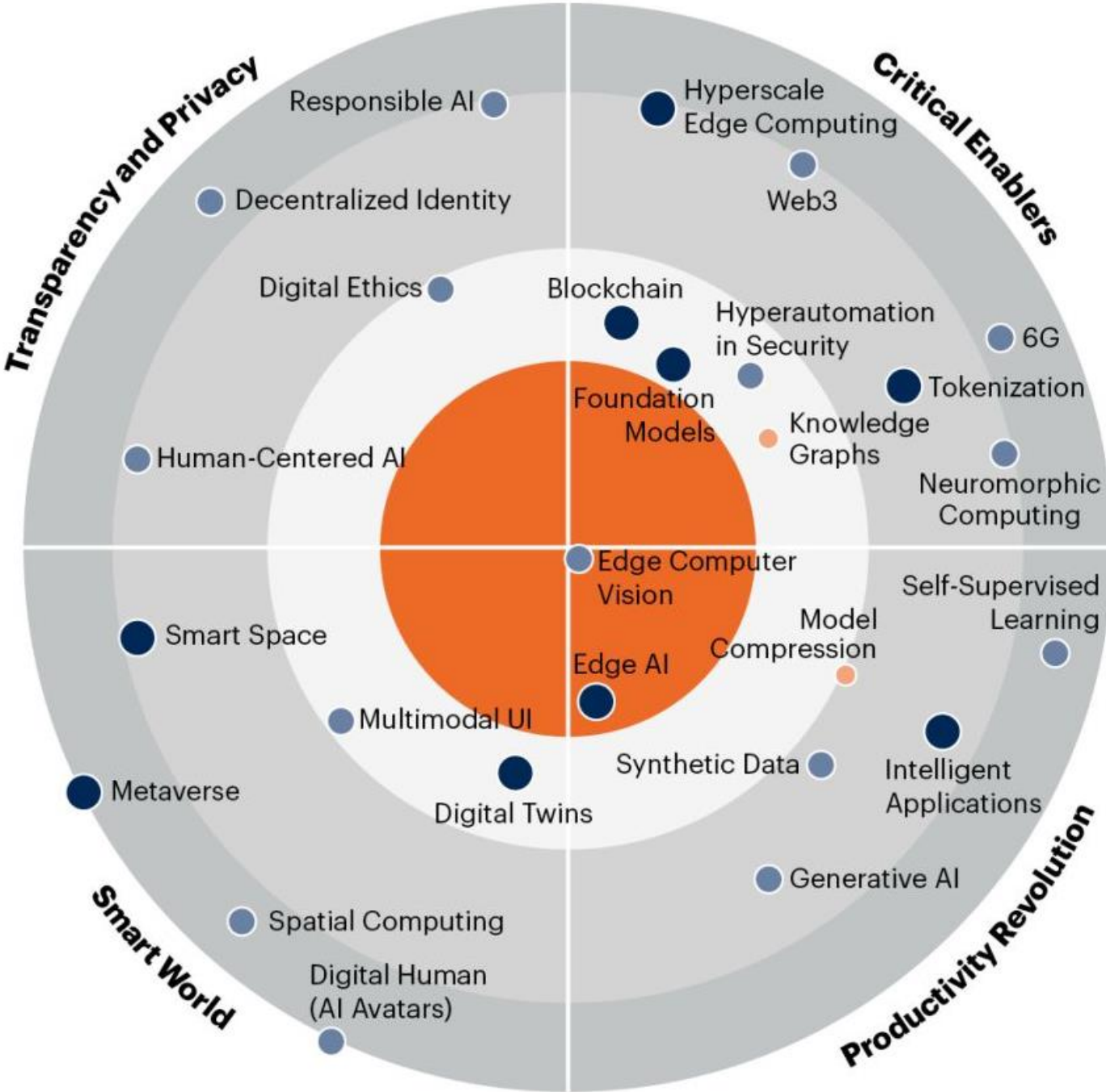
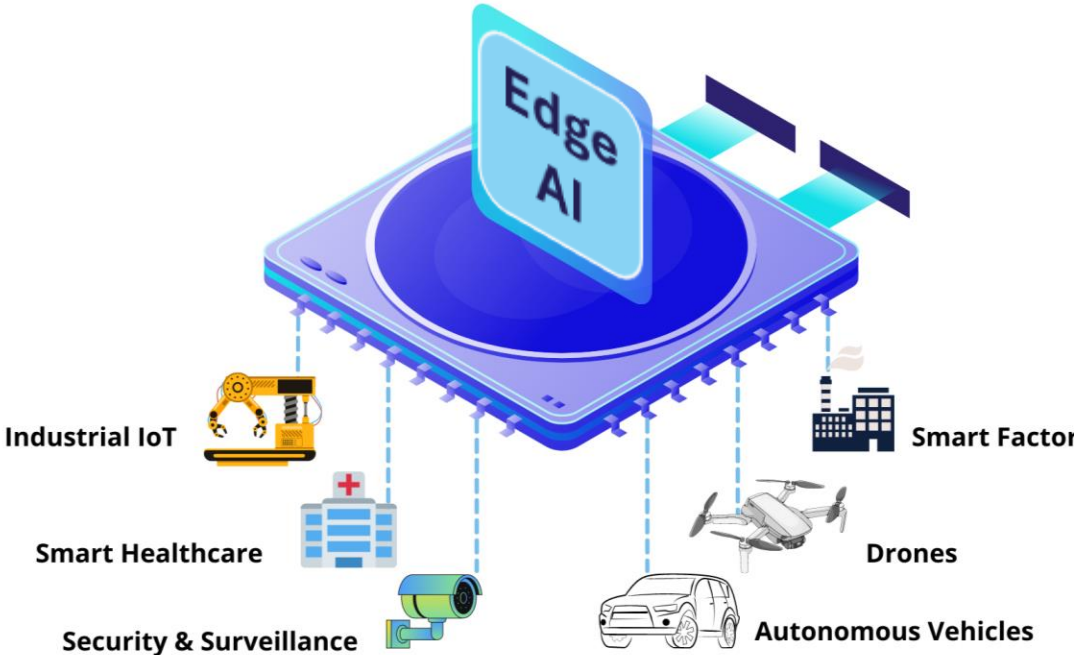


- **Chip**
- A18 Bionic chip
- 6-core CPU with 2 performance
- 4 efficiency cores
- 5-core GPU
- 16-core Neural Engine
- **Capacity**
- 512GB
- **Multiple Sensors**
- 48MP camera
- Satellite and GPS



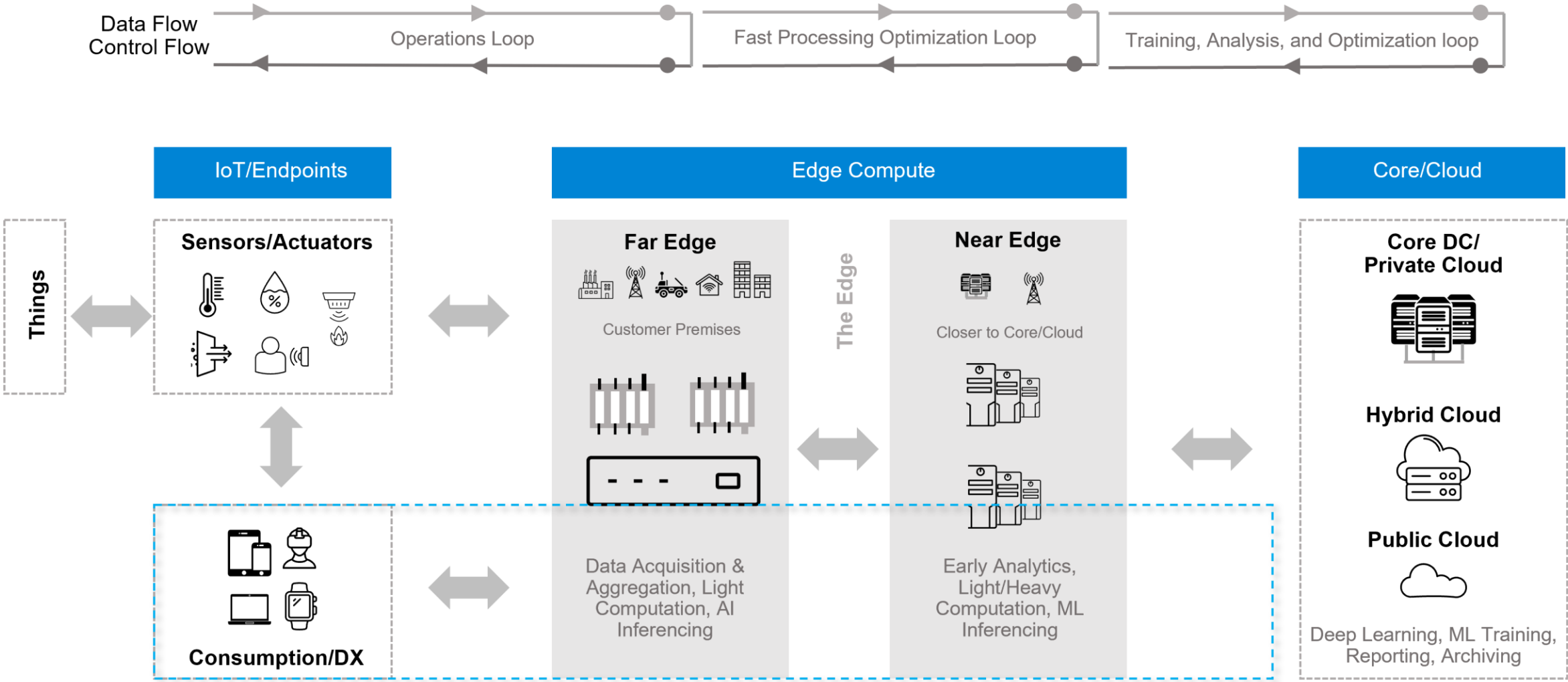
# The Emergence of Edge AI: a game changer for industries

(Gartner 2023)



# The Rise of Generative AI at the Edge

image source: Arrow Intelligent Solutions



# Small Language Models Could Redefine The AI Race,

Forbes

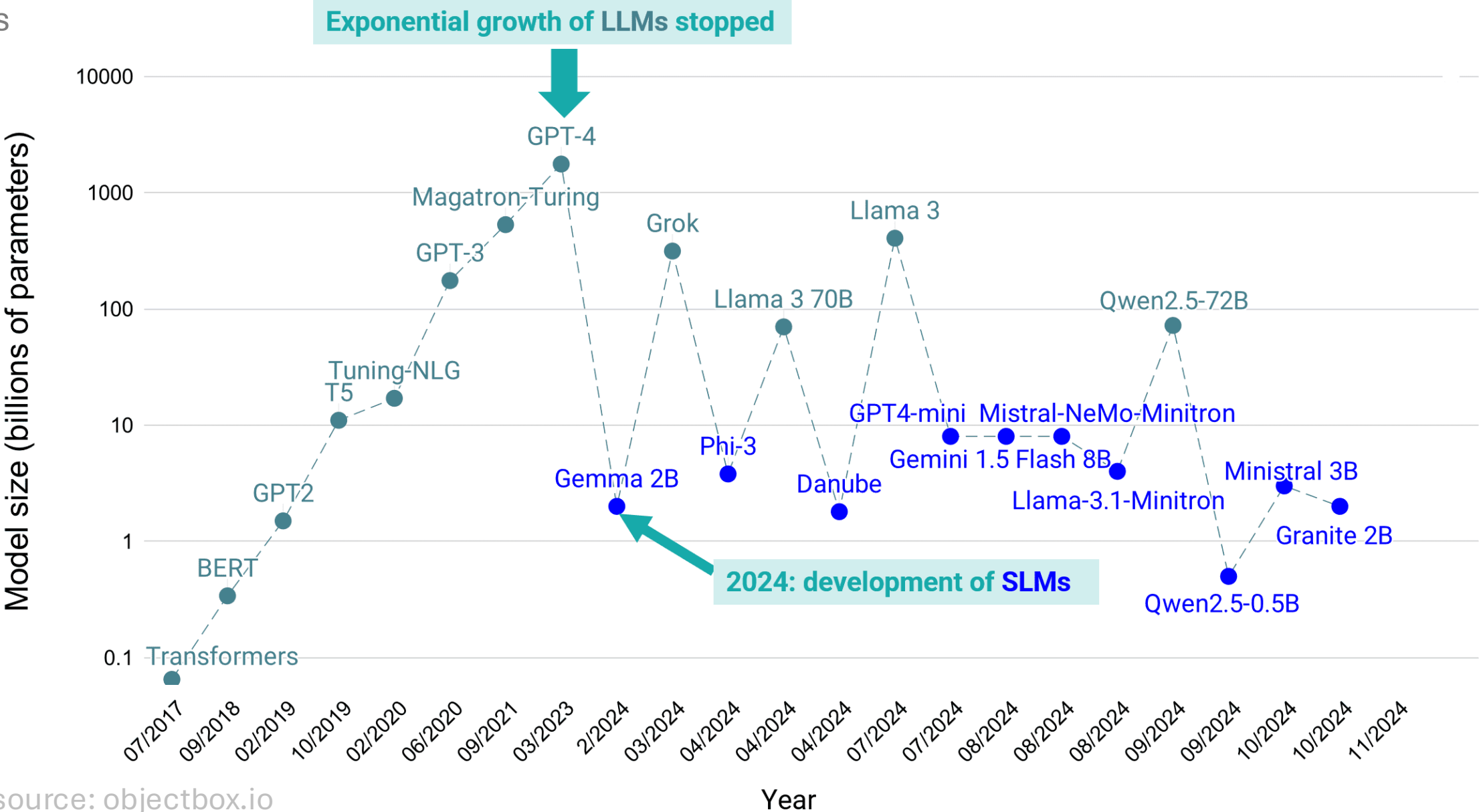
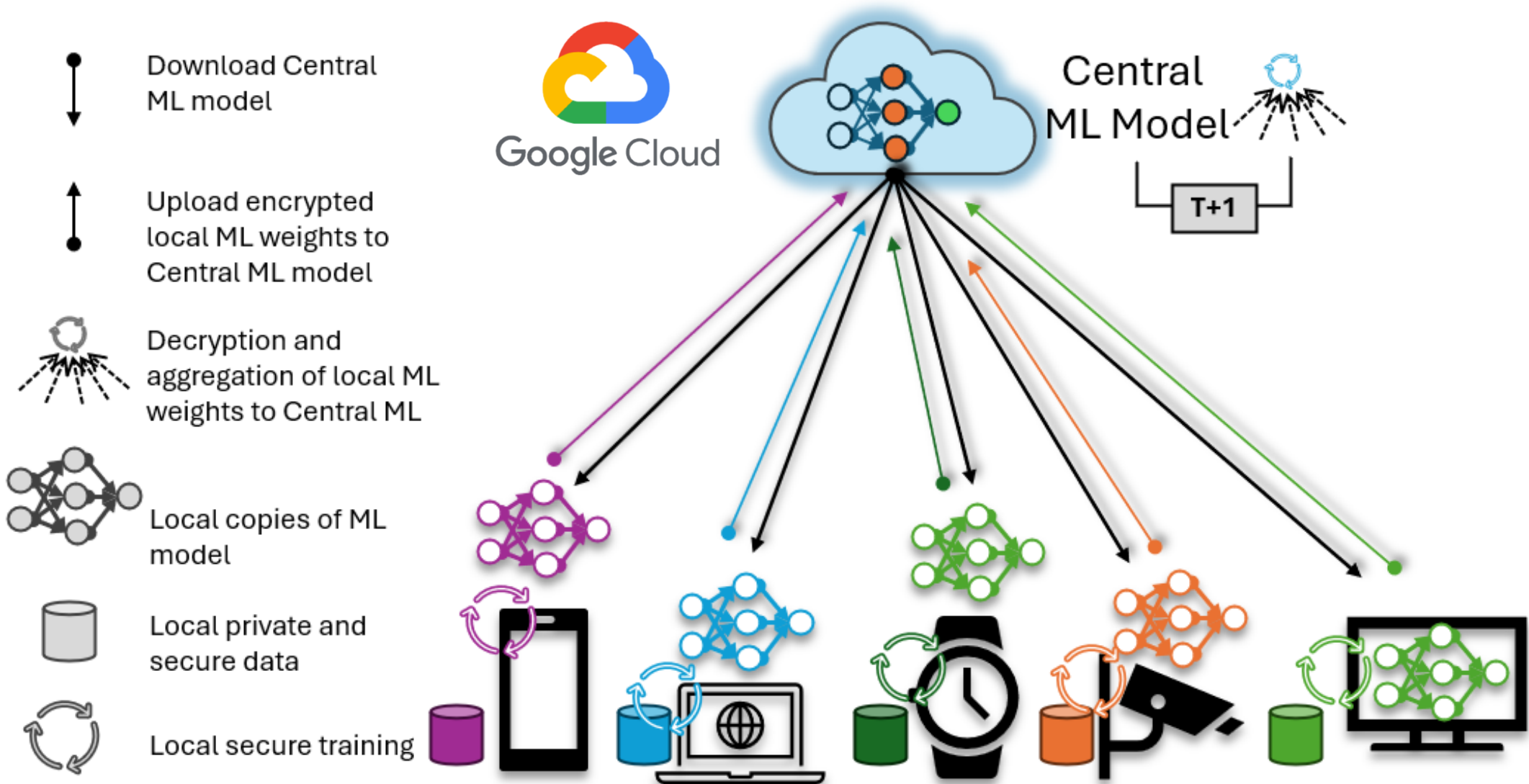


Image source: objectbox.io

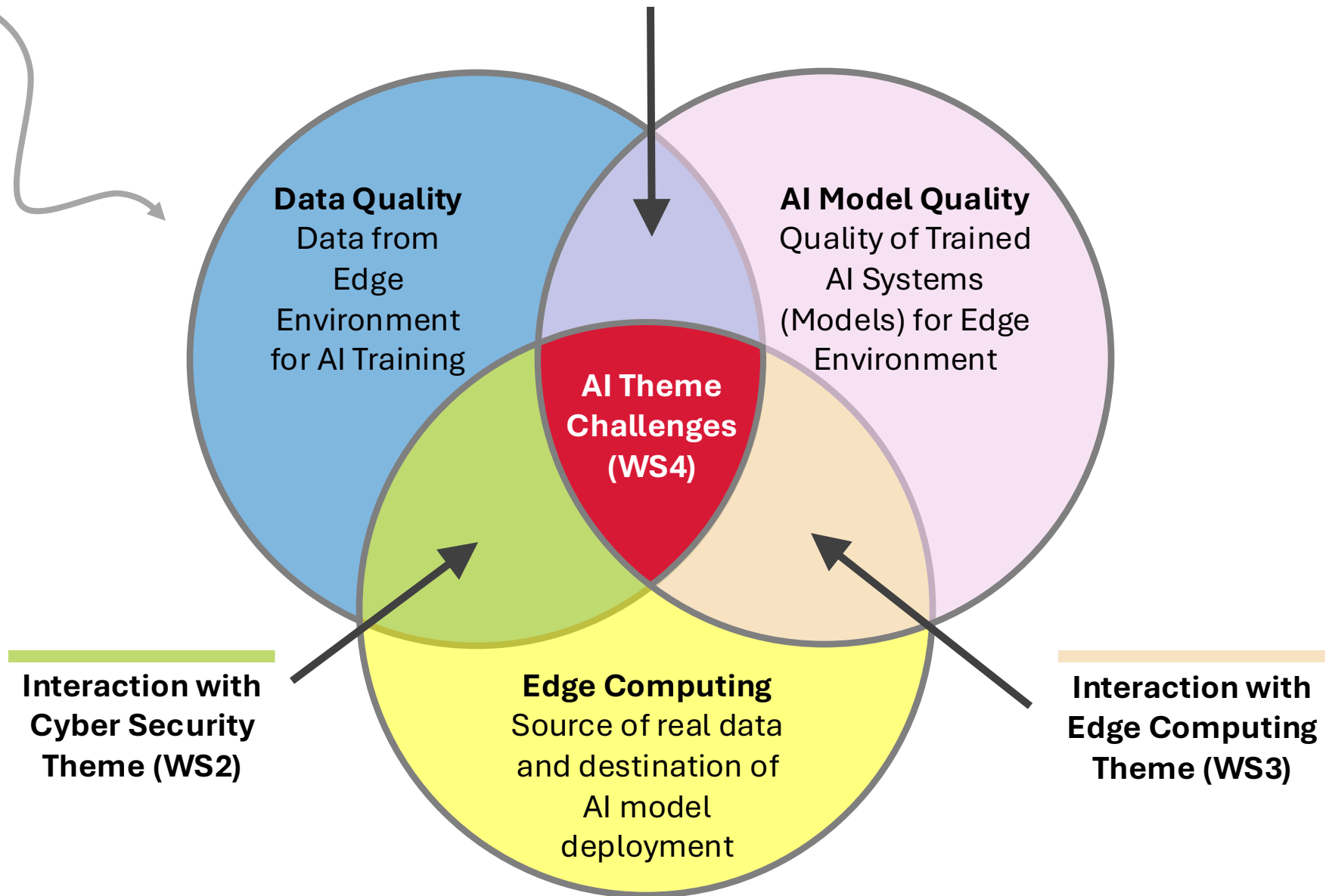


# We are the data producer and AI model trainers

Concept of Federated learning



**Interaction with Data Sensitive  
Applications of AI (WS5)**





# Newcastle University's Urban Observatory



>8 million pounds  
(Capital investment)

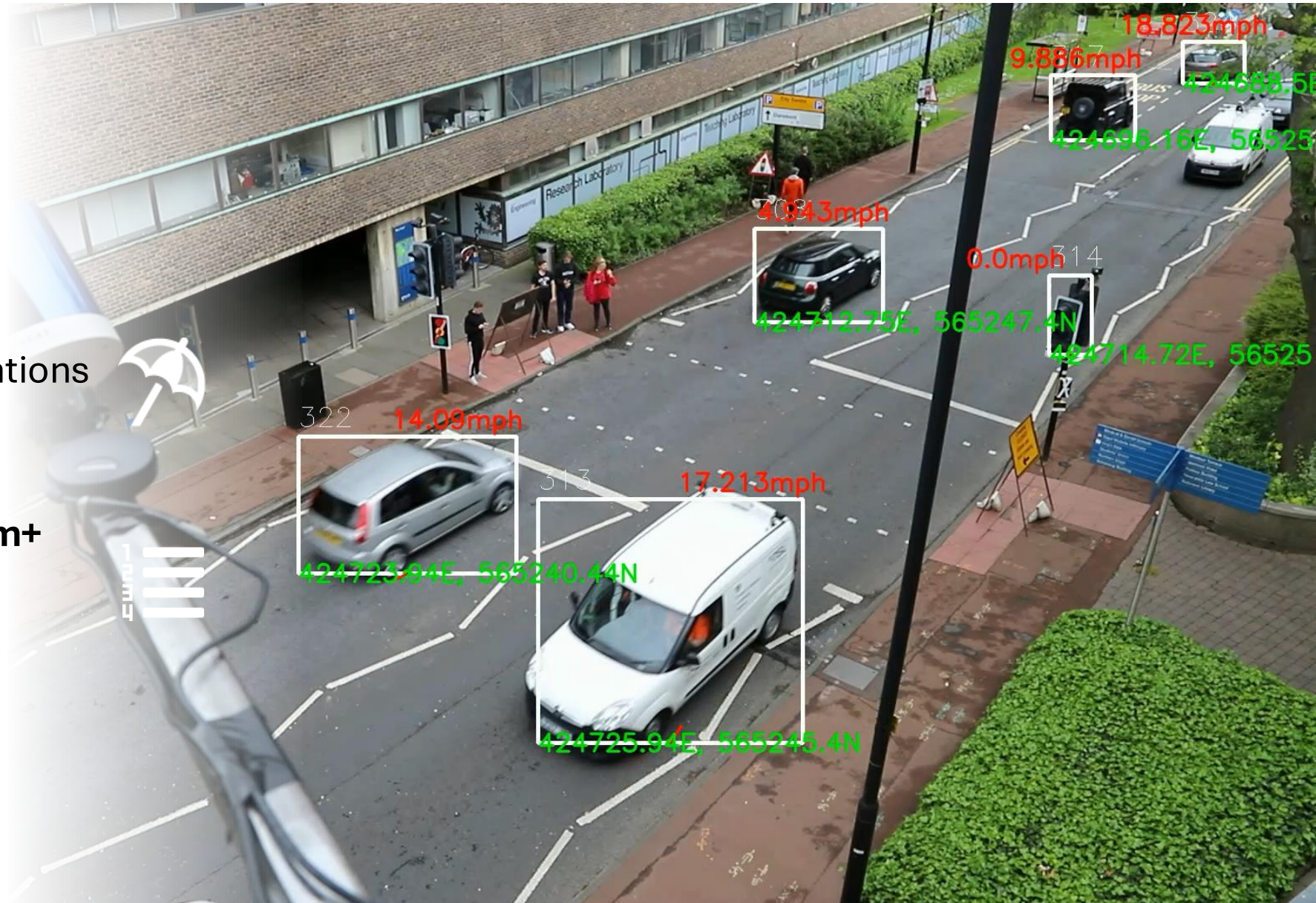


10 billion city observations  
10,000 a minute



CCTV: 500 views, 500m+  
images, 24 real-time  
feeds

Source: Phil et al (Newcastle)



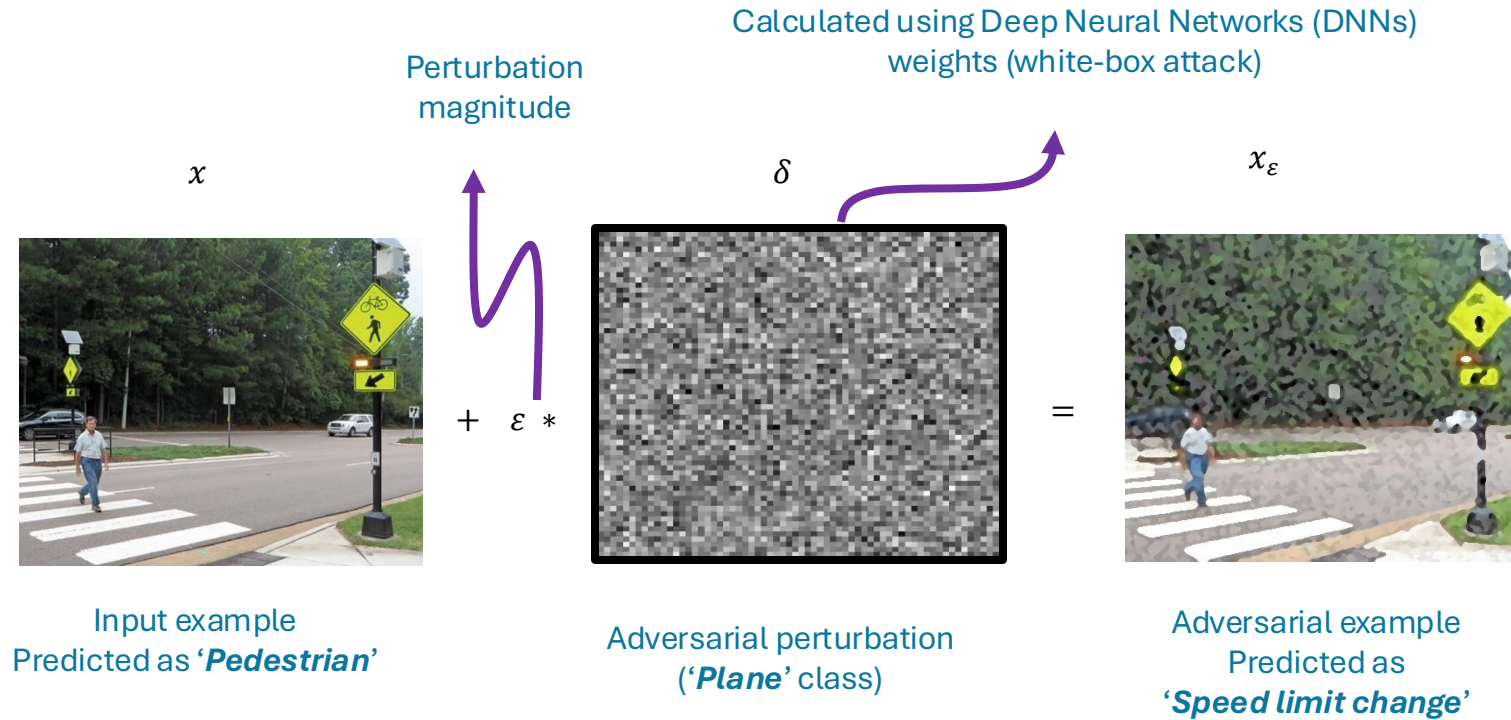
# Edge AI Data Quality Challenges

- **Data quality**
  - degradation of sensors over time
  - data out of range, out distribution, uncertainty
- **Data stream issues**
  - data retrieval - source API failure
  - network failure, network overload
- **Cyber security**
  - adversarial attacks
  - denial of services, spoofing
- **Failure**
  - hardware failure at sensor



car counts and N

# Edge AI Model Quality Challenges



(a) Default image



(b) FGM attack



(c) PGD attack



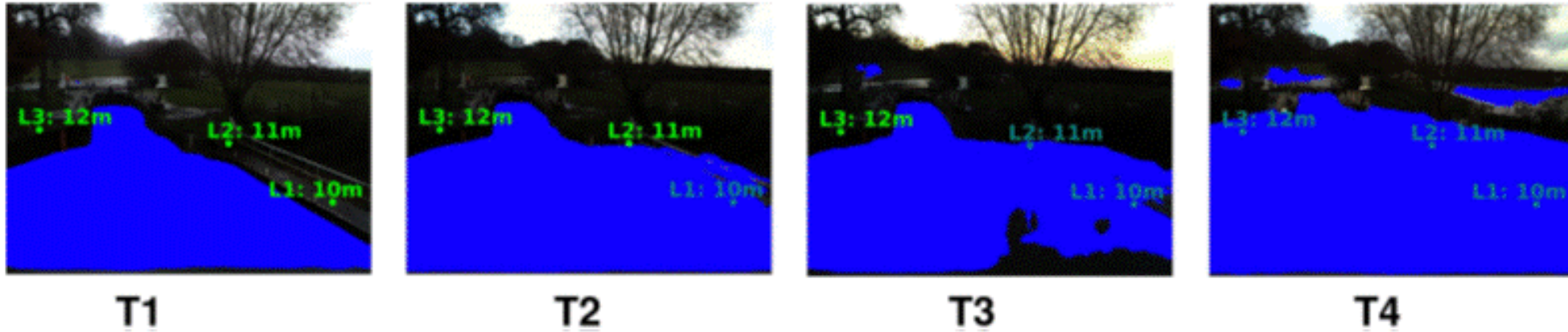
(d) AP attack

One of objectives of the AI Model Quality analysis is to subject AI model to the '**worst case conditions**' (such as adversarial cyber/attacks) and evaluate the **ability for a model to remain invariant** under such settings.

Source: Ojha et al (Newcastle)

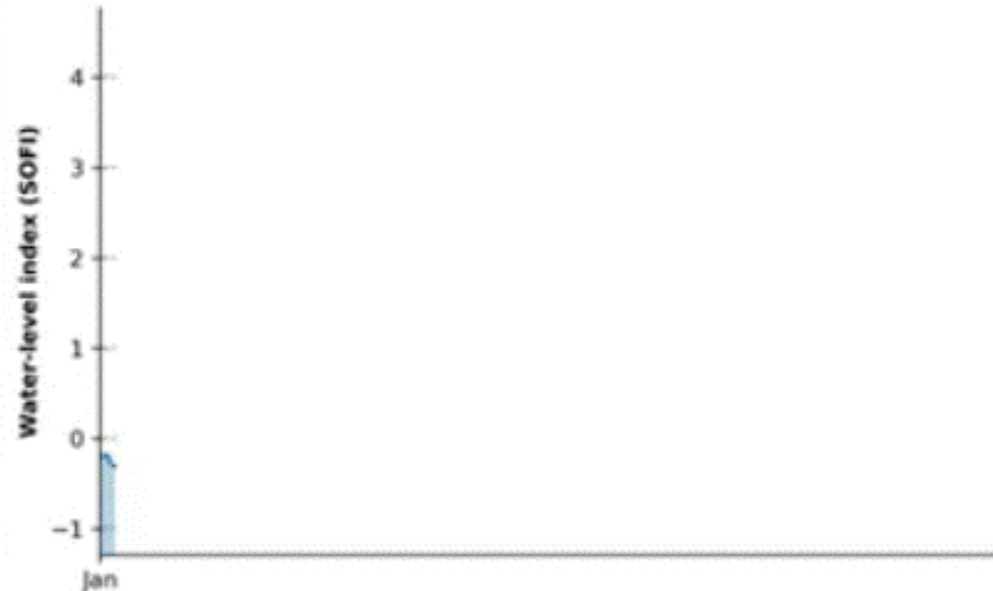
# Edge AI Powered Environment Monitoring

## Example Flood Monitoring



Time-series sequence of images of river. Blue pixels are water segmentation by using deep learning models

Evesham Lock, 2020-01-07 10:00:00



# Edge AI Powered Infrastructure Monitoring

## Example Structural Engineering

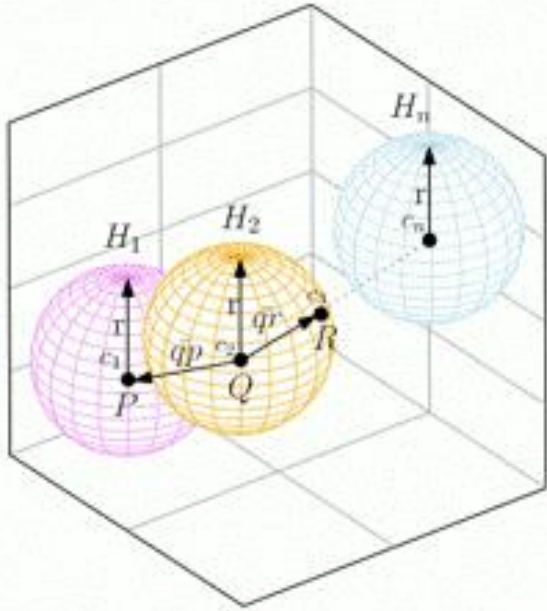


Fig A. Adaptive Hypersphere Search Algorithm for Structural Static Analysis

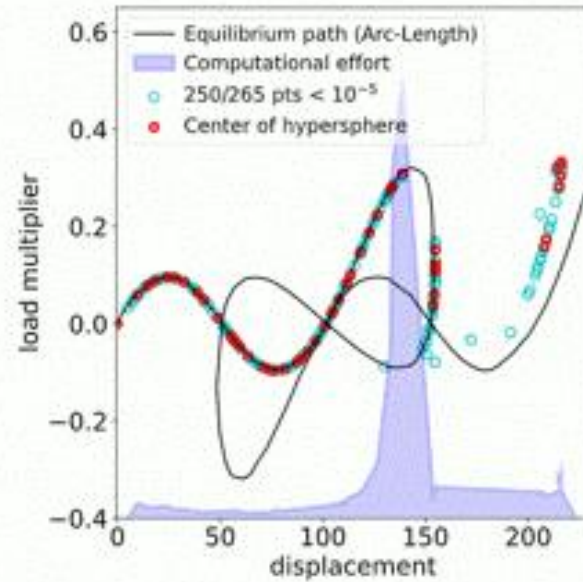
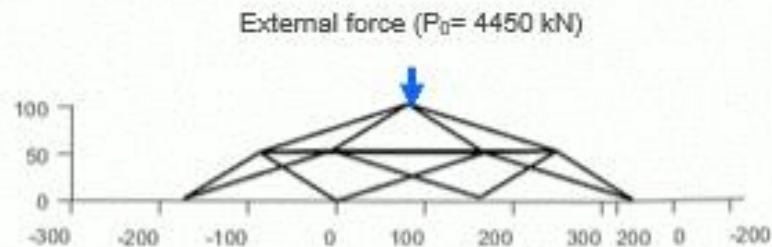


Fig B. Equilibrium Path traced using Adaptive Hypersphere Search Algorithm



Dimensions in mm

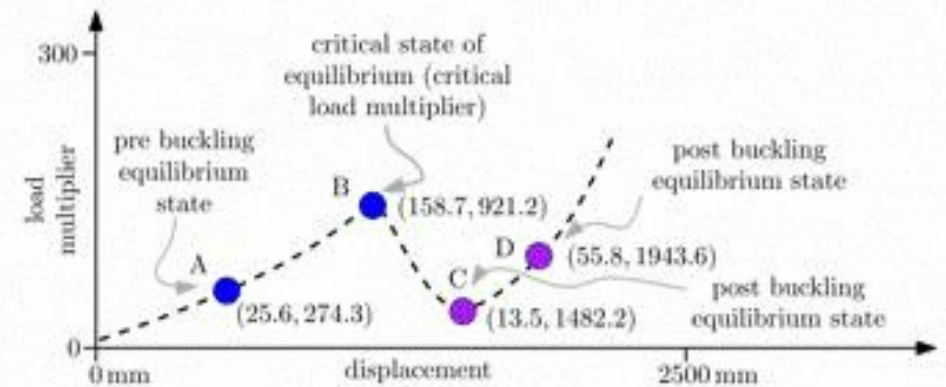
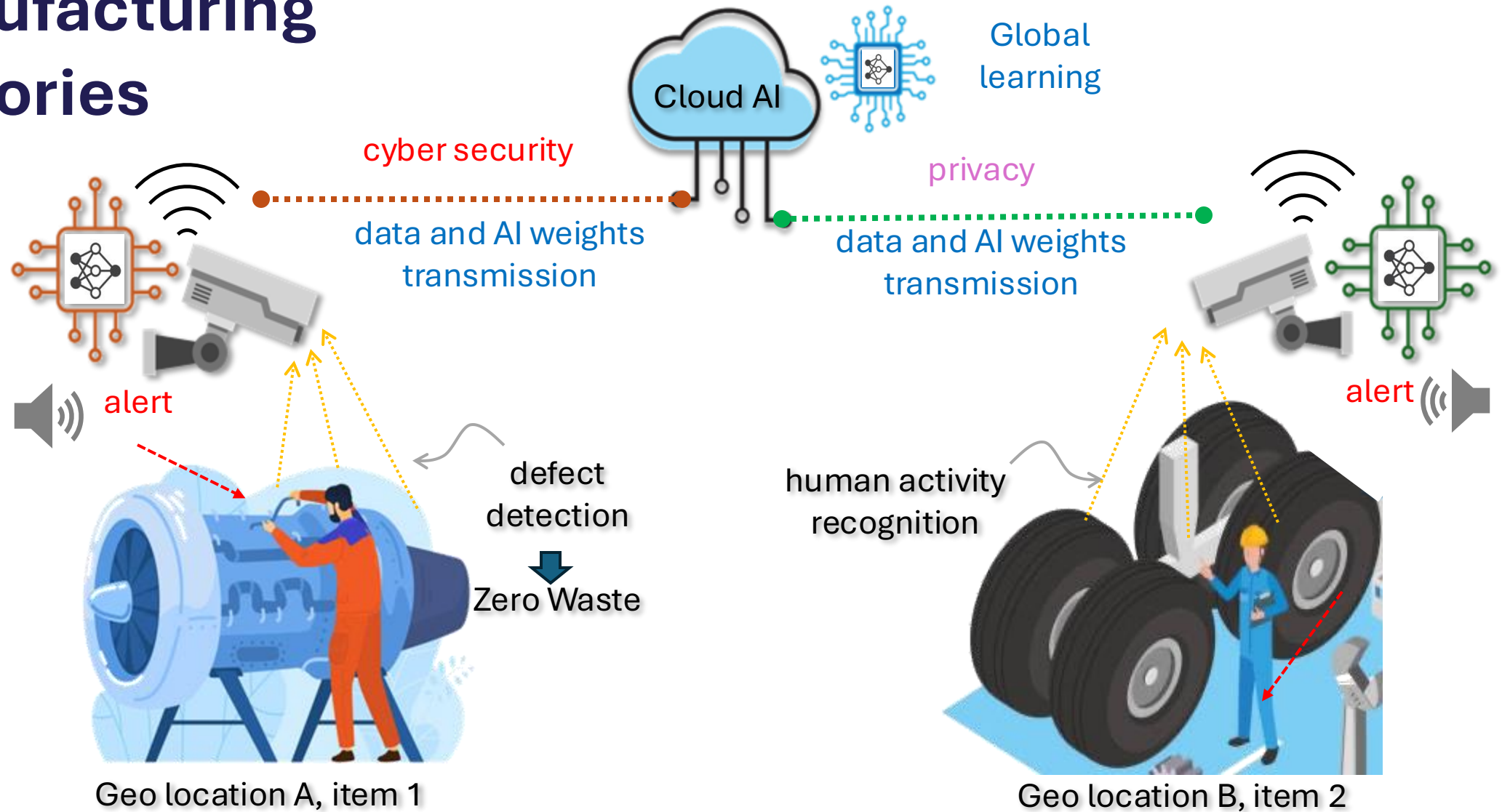


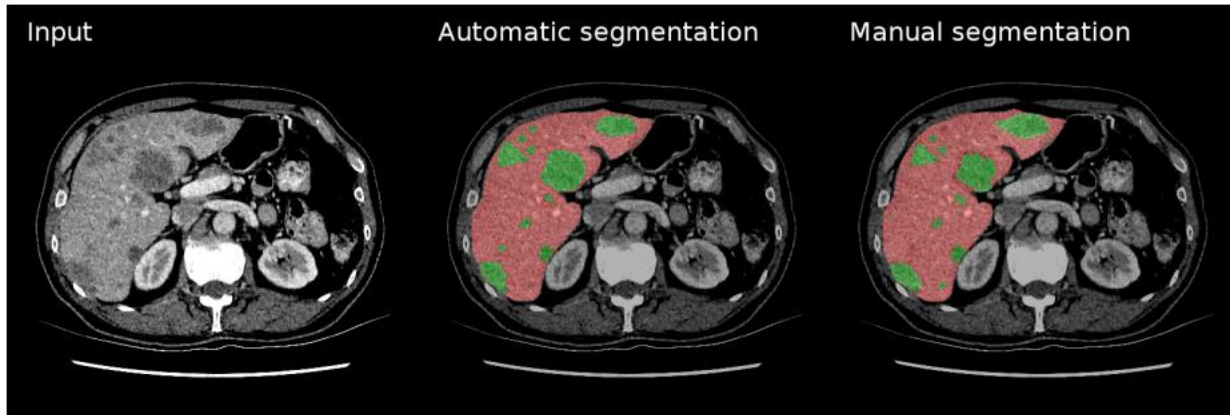
Fig C. Prediction of the Collapse (buckling Analysis)

# Edge AI Powered Manufacturing Factories

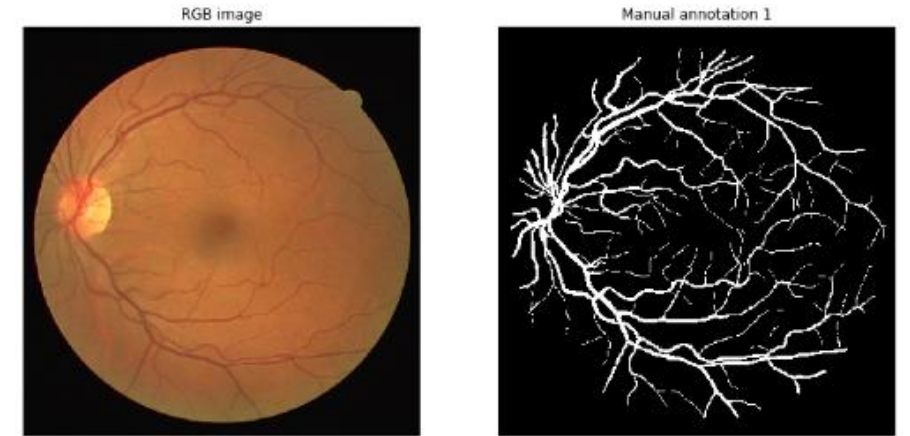




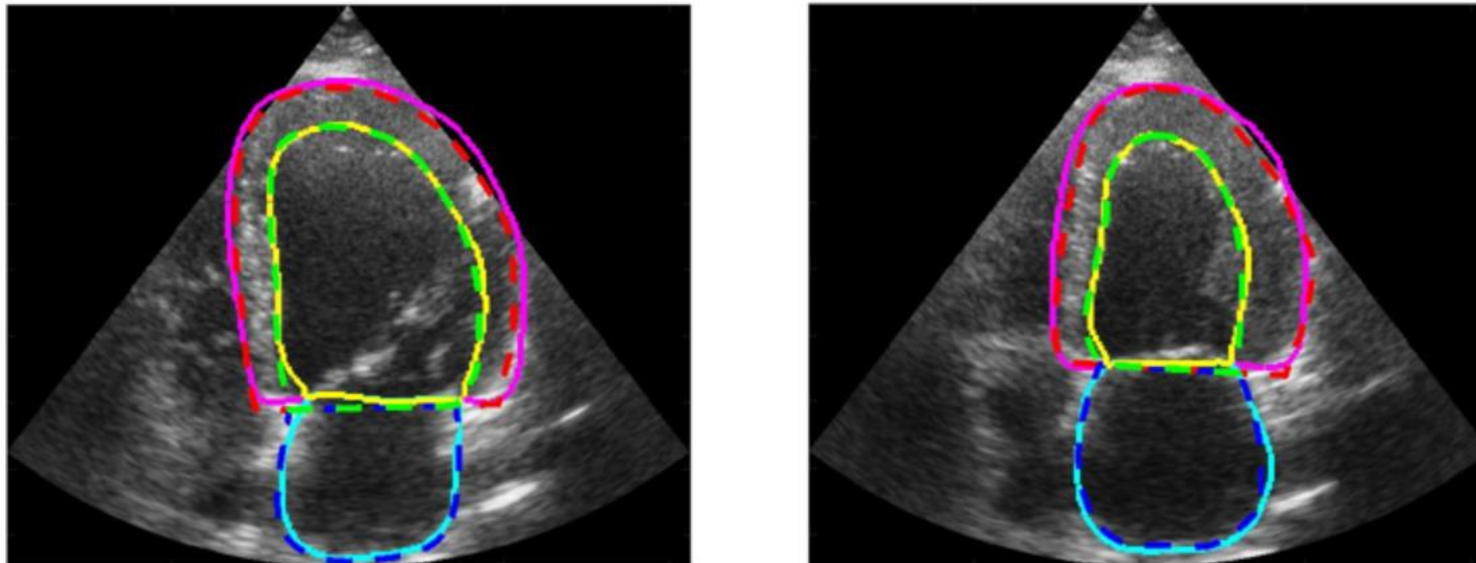
# AI Powered Medical Diagnosis



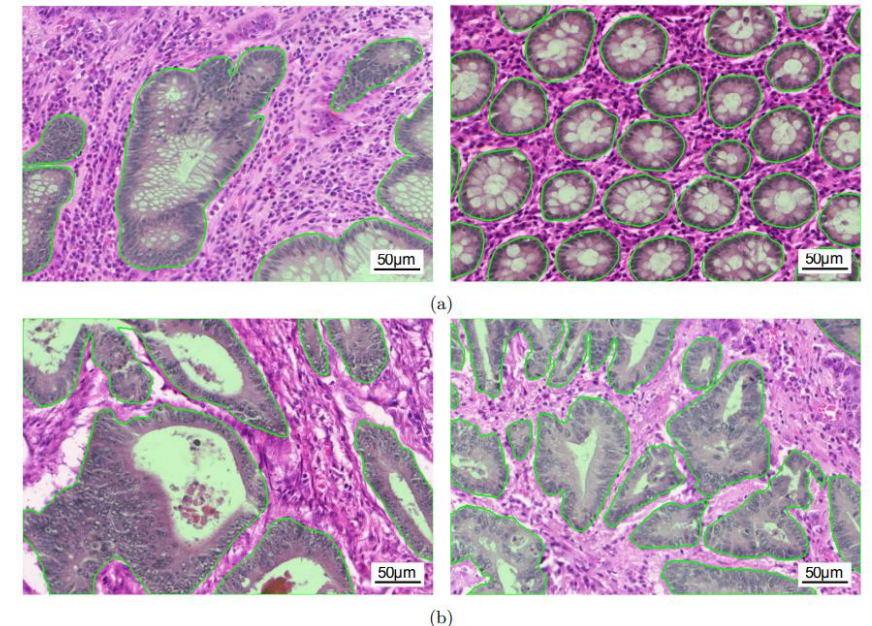
Liver Tumor Segmentation from CT scans



Digital Retinal Images for Vessel Extraction



Cardiac Acquisitions for Multi-structure Ultrasound Segmentation

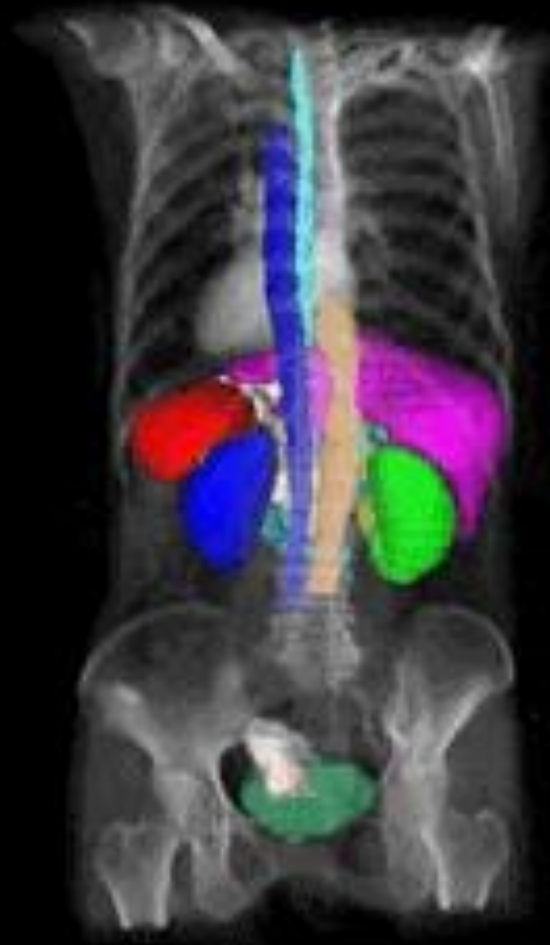


Gland Segmentation in Colon Histology Images

# MRI Scans: Multi-Modality Abdominal Multi-Organ Segmentation

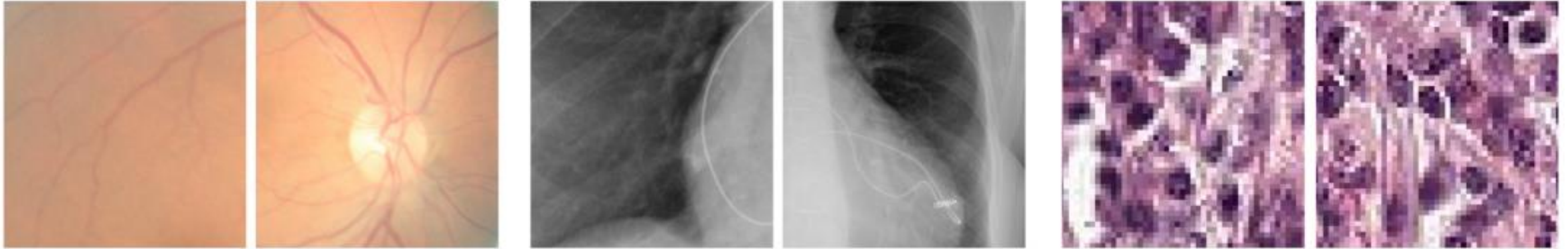
## AMOS2022

- Prostate/Uterus
- Bladder
- Duodenum
- Left Adrenal gland
- Right Adrenal gland
- Pancreas
- Postcava
- Aorta
- Stomach
- Liver
- Esophagus
- Gall Bladder
- Left Kidney
- Right Kidney
- Spleen
- Blackground

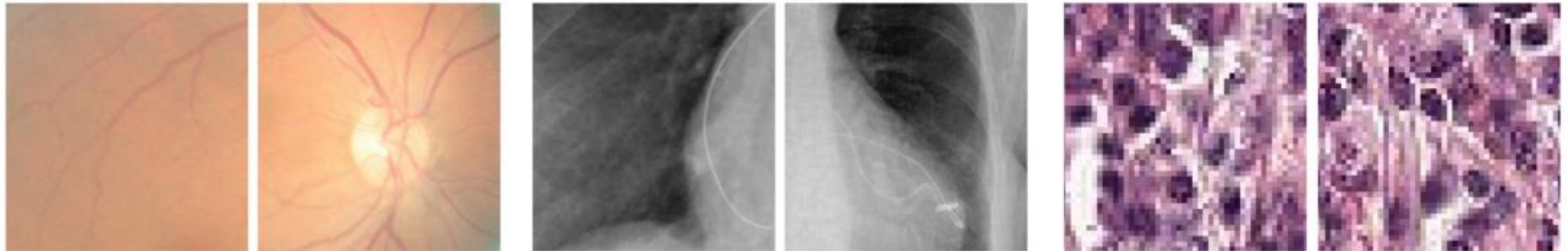


# AI Quality (Safety) Concern in Medical Image Analysis

Original  
Image



Adversarially  
Modified



Ophthalmology

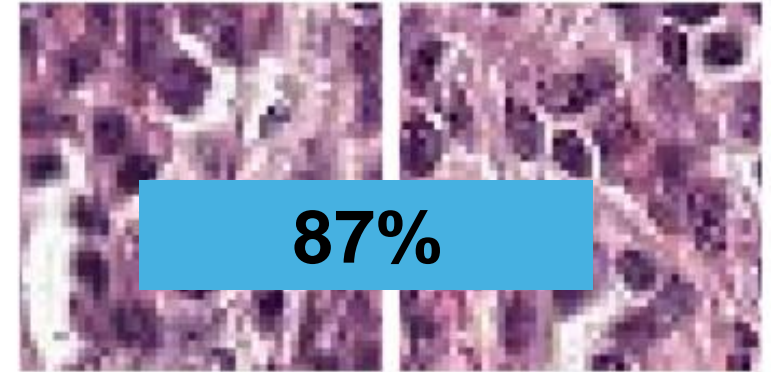
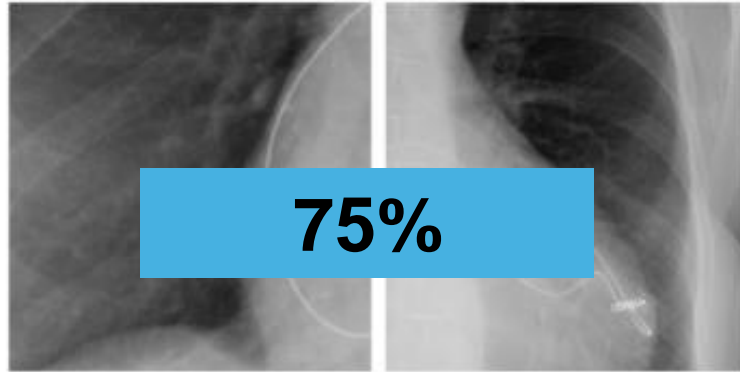
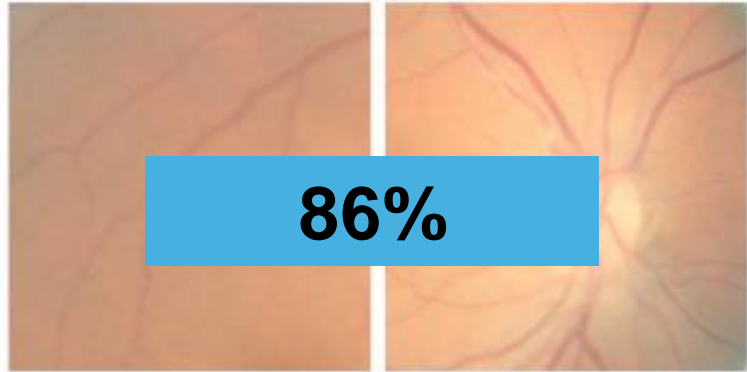
Radiology

Pathology

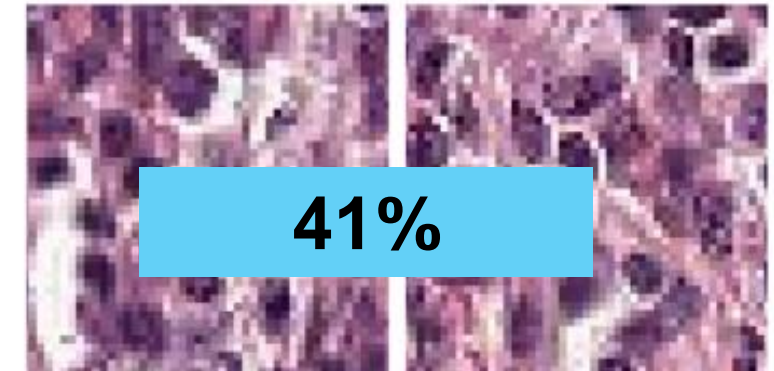
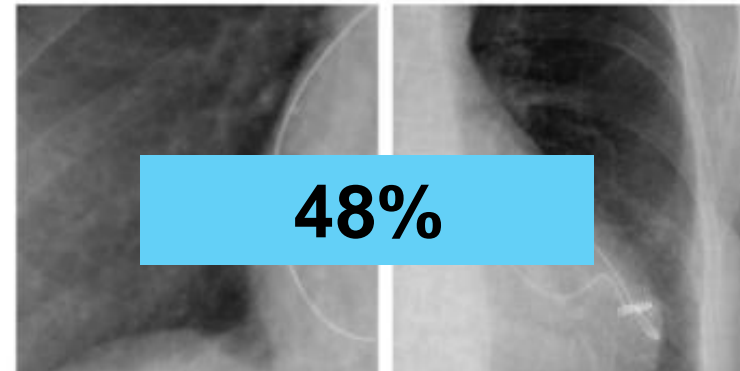
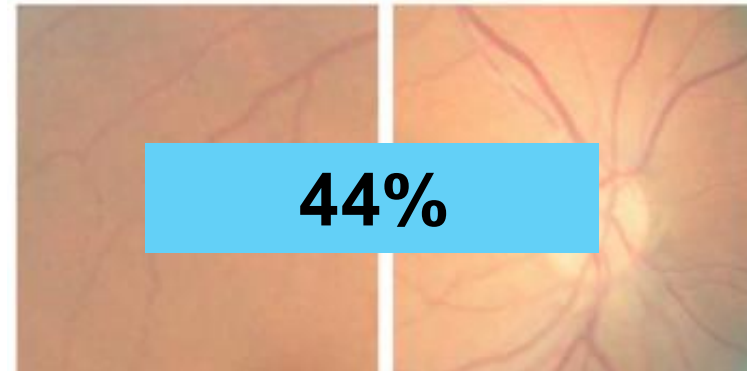
**Unperceived changes in images make misclassification**

# AI Quality (Safety) Concern in Medical Image Analysis

Original  
Image



Adversarially  
Modified



Ophthalmology

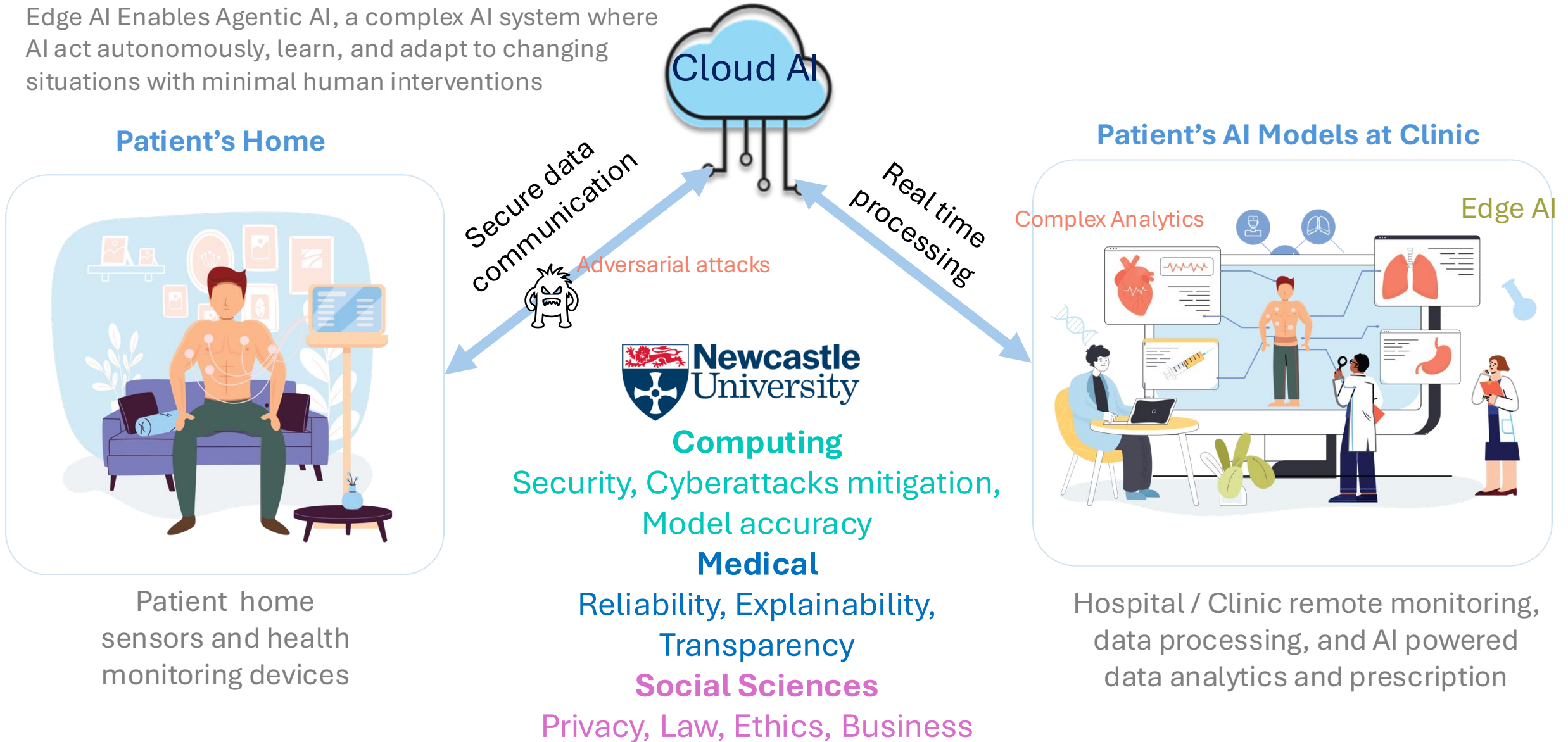
Radiology

Pathology

**Accuracy of detection decreases even on an unperceived modification**

# Edge AI ↔ Agentic AI (Next Big Wave of AI)

Edge AI Enables Agentic AI, a complex AI system where AI act autonomously, learn, and adapt to changing situations with minimal human interventions





UK Research  
and Innovation

# National AI Strategy



Engineering and  
Physical Sciences  
Research Council

**ANSI** | AI SAFETY  
INSTITUTE



# AI Model Quality

Legend:

Fundamental research

Applications



Smart Transport



Manufacturing

Led by Newcastle University



## National Edge AI Hub

EPSRC  
£12 million investment

### AI Data Quality

### Edge Computing for AI



Healthcare



Energy

### Cybersecurity

# National Edge AI Hub



## Study PhD with us

<https://edgeaihub.co.uk/phd-in-edge-ai/>

**Pathways to PhD.** Send us your research proposal and plan; we will work with you refining your PhD agenda and find suitable supervisor or institution for your PhD enrollment. We can help explore PhD funding sources if you do not have your own Govt. or self funding provisions

## Work with us

<https://edgeaihub.co.uk/>

**Pathways to Industry engagement.** We have several pathways for engagement, for example, pump-priming funding, 50-50 matching funding, and other. We will work with you and explore external industrial-academic partnership funding sources with you.

## Contact

[varun.ojha@newcastle.ac.uk](mailto:varun.ojha@newcastle.ac.uk)

[ojhavk.github.io](https://github.com/ojhavk)